



THE BRIGHTEST & BEST LED LIGHTS.



School Bus Products » 2026 Catalog

How do you provide *safety at the stop?* Choose **Opti-Luxx**.

Threats appear from all directions—**safety lighting should too.**

Opti-Luxx is the leading provider of bumper-to-bumper, inside-and-out school bus lighting options. Our vast lineup of LED products secures a **360-degree** shield of bright and dependable lighting protection in and around the entire bus to make sure students stay highly visible and safe.

We offer this comprehensive lineup of products because we work closely with school bus OEMs to innovate and bring to market the brightest and best school bus lights—delivered on time, with the industry's best quality and customer service reputation.

This catalog features some of our most popular school bus products, ready to install today to improve your visibility and safety out on the road. As always, please don't hesitate to reach out to us with any questions, or to discuss possible customization of products to meet your specific needs.



Need quick answers or additional details on any of our products in this catalog?

Visit [Opti-Luxx.com/Products](https://www.opti-luxx.com/Products) for full product information.



You're covered when you choose Opti-Luxx.

The OPTI-360 initiative is a commitment to offer a shield of safety lighting around the entirety of the bus.

Opti-Luxx

THE BRIGHTEST & BEST LED LIGHTS.

Opti-Luxx.com | (616) 379-4142

SCHOOL BUS LIGHTING

2026

Signage

37" x 10.75" Rectangular Retroreflective School Bus Sign	3
9" x 24" Driver Alert Sign	3
4.75" Round Stop Arm Light Kit	3

Warning Lights

700 Series 7" Round	4
750 Series 7" Round	4

Signal Lights

700 Series 7" Round	5
750 Series 7" Round	5
850 Series 8.5" x 5.25" Rectangle (C2)	6
500 Series 4.5" Square Double Face	6
400 Series 4" Round	7
450 Series 4" Round	7
450 Series 4" Round Red Stop Turn Tail License Plate Light	8
650 Series 6" Oval Mid Turn Marker	8

Accessory & License Plate Lights

LP 100 Series 2.8" Oval License Plate	9
4" Oval Curb Entry	9
4.5" Round White Stepwell	9
5.6" Oval Boarding	9
WK950 Series 7" 45° Scene	10
WK960 Series 6" Scene	10
AX100 Series Supplemental Warning	10

Beacons

4000 Series 6" x 5" Round High Profile	11
4000 Series 6" x 3" Round Low Profile	11
4100 Series 6" x 5" Round High Profile	11

Marker Lights

175 and 185 Series 3/4" Round Bullet	12
120 Series 4" Oval	12
140 Series 4.5" x 1.6" Rectangle	13
150 Series 2.6" x 1.2" Rectangle	13
350 Series 3.5" Teardrop	13
520 Series 5" Oval	13

Interior Lights

DL3000 Series 3" x 7" Rectangle White 6 LED Dome	14
DL3500 Series 3" x 7" Rectangle White 12 LED Dome	14
DL1500 Series 3" x 6" Rectangle White 15 LED Dome	14
DL1000 Series 3" x 7" Rectangle White 18 LED Dome	14

Some product images contained herein are modified to help show lens color or LED color and/or position.

SIGNAGE

COMING SOON!



RECTANGULAR RETROREFLECTIVE SCHOOL BUS SIGN

37" L X 10.75" W X 1.15" D

PART NUMBER	LENS	LED	MOUNT	CONNECTION
100LS1005	RETROREFLECTIVE YELLOW	○ WHITE	8-SCREW	2 WIRE

DRIVER ALERT SIGN

24" L X 9" W X .8" D

FEATURES

- Easy install
- Added visibility for student safety
- Alternating red and amber LED signaling
- Aftermarket solution for nearly any bus model



PRODUCT PAGE WITH
FLASH PATTERN VIDEO



PART NUMBER	LENS / LED	MOUNT	CONNECTION
100LS0001	● / ● RED / AMBER RED	SCREW	8 WIRES—12V/24V



4.75" STOP ARM LIGHT KIT*

4.77" ROUND X 1" DEPTH

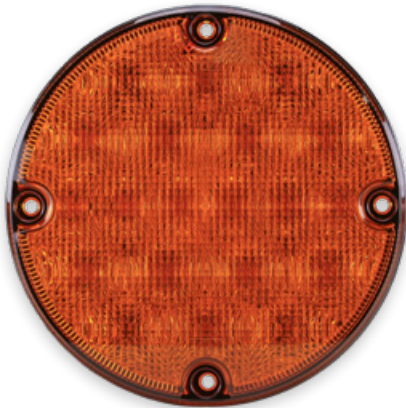
PART NUMBER	LENS / LED	MOUNT	CONNECTION
110WA0012	● ● RED / RED	SCREW	2-WIRE

FEATURES

- LED lighting design provides years of maintenance-free service
- Increased visibility
- Decreases passing violations
- More cost-effective than traditional units
- Installs in minutes
- Kit consists of four 12-LED lights, mounting screws and harness
- Double-sided flush mount to existing, standard electric and pneumatic bus stop arms
- Certifications include: SAE J576, J578, J759, J1133 and FMVSS 131

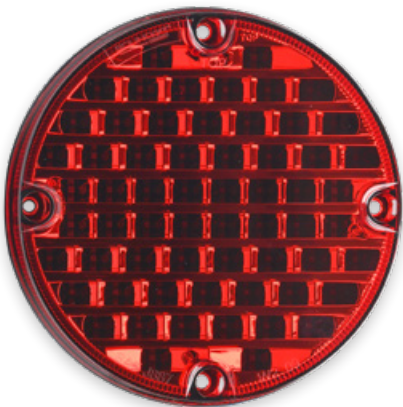
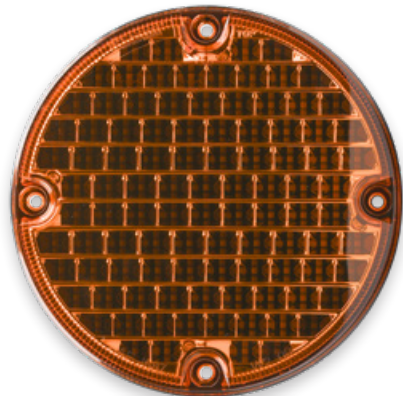
* Kit includes lights only, physical sign is not included.

WARNING LIGHTS



700 SERIES 7.2" ROUND X 1.7" DEPTH SCREW MOUNT WITH 2 OR 3 WIRE CONNECTION

PART NUMBER	LENS / LED	MOUNT	CONNECTION
100WA0012	● AMBER / AMBER ●	SCREW	3-WIRE
100WA0004	● AMBER / AMBER ●	SCREW	2-WIRE
100WA0013	● RED / RED ●	SCREW	3-WIRE
100WA0003	● RED / RED ●	SCREW	2-WIRE



750 SERIES 7.2" ROUND X 1.7" DEPTH SCREW MOUNT WITH 2 OR 3 WIRE CONNECTION

PART NUMBER	LENS / LED	MOUNT	CONNECTION
100WA0010	● AMBER / AMBER ●	SCREW	3-WIRE
100WA0016	● AMBER / AMBER ●	SCREW	2-WIRE
100WA0011	● RED / RED ●	SCREW	3-WIRE
100WA0017	● RED / RED ●	SCREW	2-WIRE

SIGNAL LIGHTS

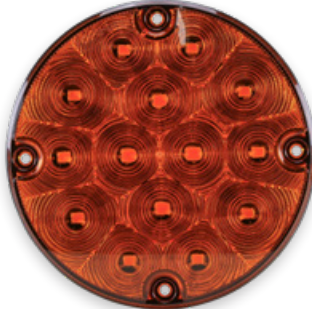
700 SERIES 7" ROUND

7.2" ROUND X 1.7" DEPTH

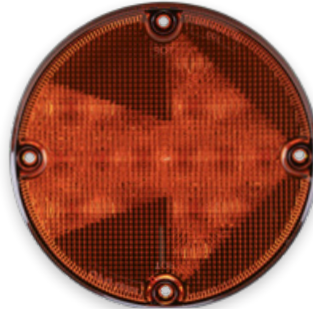
SCREW MOUNT WITH
2 OR 3 WIRE CONNECTION



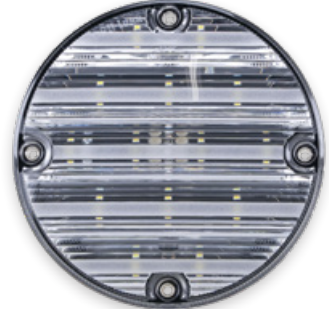
100CS0012



100TS0012 (Rear of Bus)
100CT0009 (Front of Bus)



100TS0011



100RL0010

PART NUMBER	FUNCTION	VOLTAGE	LENS / LED	MOUNT	CONNECTION
100CS0012	STOP/TAIL/TURN	12	● RED / ● RED	SCREW	3-WIRE
100TS0012	TURN (REAR OF BUS)	12	● AMBER / ● AMBER	SCREW	2-WIRE
100CT0009	PARK/TURN (FRONT OF BUS)	12	● AMBER / ● AMBER	SCREW	3-WIRE
100TS0011	TURN (W/ARROW)	12	● AMBER / ● AMBER	SCREW	2-WIRE
100RL0010	REVERSE	12	○ CLEAR / ○ WHITE	SCREW	2-WIRE

750 SERIES 7" ROUND

7.2" ROUND X 1.7" DEPTH

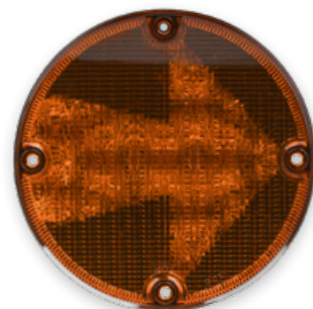
SCREW MOUNT WITH
2 OR 3 WIRE CONNECTION



100CS0010



100TS0007 (Rear of Bus)
100CT0008 (Front of Bus)



100TS0009



100RL0001

PART NUMBER	FUNCTION	VOLTAGE	LENS / LED	MOUNT	CONNECTION
100CS0010	STOP/TAIL/TURN	12	● RED / ● RED	SCREW	3-WIRE
100TS0007	TURN (REAR OF BUS)	12	● AMBER / ● AMBER	SCREW	2-WIRE
100CT0008	PARK/TURN (FRONT OF BUS)	12	● AMBER / ● AMBER	SCREW	3-WIRE
100TS0009	TURN (W/ARROW)	12	● AMBER / ● AMBER	SCREW	2-WIRE
100RL0001	REVERSE	12	○ CLEAR / ○ WHITE	SCREW	2-WIRE

SIGNAL LIGHTS

850 SERIES C2 LIGHTS

8.5" H X 5.4" W X .75" D

SCREW MOUNT WITH AMP SUPERSEAL CONNECTION



100CS0006



100CT0004



100TS0008



100RL0007

PART NUMBER	FUNCTION	VOLTAGE	LENS / LED	MOUNT	CONNECTION
100CS0006	STOP/TAIL/TURN	12	● ● RED / RED	SCREW	INTEGRATED AMP SUPERSEAL CONNECTOR
100CT0004	PARK/TURN	12	● ● AMBER / AMBER	SCREW	INTEGRATED AMP SUPERSEAL CONNECTOR
100TS0008	TURN (W/ARROW)	12	● ● AMBER / AMBER	SCREW	INTEGRATED AMP SUPERSEAL CONNECTOR
100RL0007	REVERSE	12	○ ○ CLEAR / WHITE	SCREW	INTEGRATED AMP SUPERSEAL CONNECTOR

500 SERIES 4.5" SQUARE DUAL FACE

4.7" H X 4.5" W X 2.2" D

BOLT MOUNT WITH
3-WIRE CONNECTION



100CT0005



100CT0006



100CT0007

PART NUMBER	FUNCTION	VOLTAGE	LENS / LED	MOUNT	CONNECTION						
100CT0005	TURN/PARK/MARKER (UNIVERSAL POSITION)	12	<table border="0"> <tr> <td>● REAR ●</td> <td>● FRONT ●</td> <td>● SIDE ●</td> </tr> <tr> <td>AMBER / AMBER</td> <td>AMBER / AMBER</td> <td>AMBER / AMBER</td> </tr> </table>	● REAR ●	● FRONT ●	● SIDE ●	AMBER / AMBER	AMBER / AMBER	AMBER / AMBER	BOLT	3-WIRE
● REAR ●	● FRONT ●	● SIDE ●									
AMBER / AMBER	AMBER / AMBER	AMBER / AMBER									
100CT0006	TURN/PARK/MARKER (CURB SIDE)	12	<table border="0"> <tr> <td>● REAR ●</td> <td>● FRONT ●</td> <td>● CURB SIDE ●</td> </tr> <tr> <td>RED / RED</td> <td>AMBER / AMBER</td> <td>AMBER / AMBER</td> </tr> </table>	● REAR ●	● FRONT ●	● CURB SIDE ●	RED / RED	AMBER / AMBER	AMBER / AMBER	BOLT	3-WIRE
● REAR ●	● FRONT ●	● CURB SIDE ●									
RED / RED	AMBER / AMBER	AMBER / AMBER									
100CT0007	TURN/PARK/MARKER (ROAD SIDE)	12	<table border="0"> <tr> <td>● REAR ●</td> <td>● FRONT ●</td> <td>● ROAD SIDE ●</td> </tr> <tr> <td>RED / RED</td> <td>AMBER / AMBER</td> <td>AMBER / AMBER</td> </tr> </table>	● REAR ●	● FRONT ●	● ROAD SIDE ●	RED / RED	AMBER / AMBER	AMBER / AMBER	BOLT	3-WIRE
● REAR ●	● FRONT ●	● ROAD SIDE ●									
RED / RED	AMBER / AMBER	AMBER / AMBER									

SIGNAL LIGHTS

400 SERIES 4" ROUND

FLANGE MOUNT
WITH PIGTAIL WIRE



100CS0016



100TS0014



100RL0012

PART NUMBER	FUNCTION	VOLTAGE	LENS / LED	MOUNT	CONNECTION
100CS0016	STOP, TAIL, TURN	12	● RED / ● RED	FLANGE	3-WIRE
100TS0014	TURN	12	● AMBER / ● AMBER	FLANGE	2-WIRE
100RL0012	REVERSE	12	○ CLEAR / ○ WHITE	FLANGE	2-WIRE

450 SERIES 4" ROUND

FLANGE MOUNT
WITH PIGTAIL WIRE



100CS0002



100TS0002



100RL0005

PART NUMBER	FUNCTION	VOLTAGE	LENS / LED	MOUNT	CONNECTION
100CS0002	STOP, TAIL, TURN	12	● RED / ● RED	FLANGE	3-WIRE
100TS0002	TURN	12	● AMBER / ● AMBER	FLANGE	2-WIRE
100RL0005	REVERSE	12	○ CLEAR / ○ WHITE	FLANGE	2-WIRE

400 & 450 SERIES 4" ROUND

GROMMET MOUNT WITH 3-WIRE
AND PL3 CONNECTORS



110CS0001



110TS0004

PART NUMBER	SERIES	FUNCTION	VOLTAGE	LENS / LED	MOUNT	CONNECTION
110CS0001	450	STOP, TAIL, TURN	12	● RED / ● RED	GROMMET	3-WIRE
110TS0004	400	TURN	12	● AMBER / ● AMBER	GROMMET	PL3

SIGNAL LIGHTS

450 SERIES 4" ROUND RED STOP/TURN/TAIL/ + LICENSE PLATE LIGHT



100CS0011

PART NUMBER	SERIES	FUNCTION	VOLTAGE	LENS / LED	MOUNT	CONNECTION
100CS0011	450	STOP, TAIL, TURN and LICENSE PLATE LIGHT	12	● RED / ● RED	SCREW	3-WIRE

650 SERIES 6" OVAL MID-TURN MARKER



110CM0001



100CM0001

PART NUMBER	FUNCTION	VOLTAGE	LENS/ LED	MOUNT	CONNECTION
110CM0001	MID TURN MARKER	12	● AMBER / ● AMBER	GROMMET	3-WIRE
100CM0001	MID TURN MARKER	12	● AMBER / ● AMBER	SCREW (NO GROMMET)	3-WIRE
WITH GUARD 110CM0002	MID TURN MARKER With Guard	12	● AMBER / ● AMBER	SCREW (WITH GUARD)	3-WIRE



◀ Black mounting guard for 100CM0001 is available as a standalone part using part number: 100BR0003



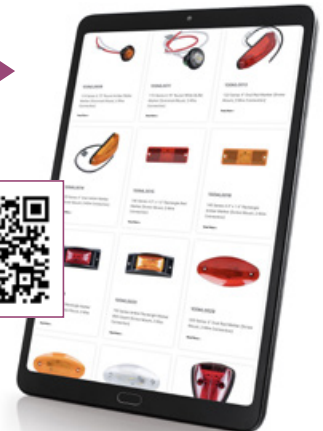
110CM0002
(Ships with Guard Included)

Find the right school bus light for your application ►

To learn more about any Opti-Luxx LED School Bus Light, please visit the school bus lights section of Opti-Luxx.com, or call (616) 379-4142 to speak with a sales representative.



SCHOOL BUS LIGHTS
PRODUCT PAGE



ACCESSORY LIGHTS



LP100 SERIES 2.8" OVAL LICENSE PLATE LIGHT

2.8" W X 1.74" H X 1.96" D – 12 LEDs

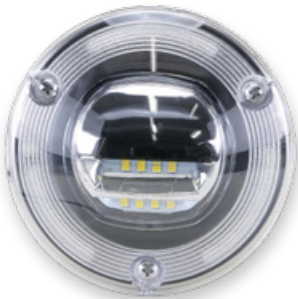
PART NUMBER	VOLTAGE	LENS/ LED	MOUNT	CONNECTION
100LP0002	12 / 24	○ CLEAR / WHITE	SCREW	2-WIRE



4" OVAL CURB ENTRY LIGHT

4" W X 2.8" H X 1.25" D – 12 LEDs

PART NUMBER	VOLTAGE	LENS/ LED	MOUNT	CONNECTION
100AL0002	12 / 24	○ CLEAR / WHITE	SCREW	2-WIRE



4.5" ROUND STEPWELL LIGHT

4.48" ROUND X 1.2" D – 8 LEDs

PART NUMBER	VOLTAGE	LENS/ LED	MOUNT	CONNECTION
100BL0002	12 / 24	○ CLEAR / WHITE	SCREW	2-WIRE



5.6" OVAL BOARDING LIGHT

5.6" W X 4.6" H X 2.6" D – 8 LEDs

PART NUMBER	VOLTAGE	LENS/ LED	MOUNT	CONNECTION
100WK0001	12 / 24	○ CLEAR / WHITE	M8 BOLT	2-WIRE

ACCESSORY LIGHTS



45°
MOUNT-READY

WK950 SERIES 7" RECTANGULAR SCENE LIGHT

7" L X 2.1" W X 1.46" H – 6 LED

	PART NUMBER	LUMENS	LENS/ LED	MOUNT	CONNECTION
	100WK0004	1500 lm ±10%	○ ○ CLEAR / WHITE	SCREW	2-WIRE
CISPR CERTIFIED	100WK0009	1500 lm ±10%	○ ○ CLEAR / WHITE	SCREW	2-WIRE



100WK0004



100WK0009

CISPR CERTIFIED




HIGH-TEMP
RATED

WK960 SERIES 6" OVAL SCENE LIGHT

5.6" L X 1.2" W X 1.3" H – 6 LED



**GREAT FOR
UNDER-HOOD
PLACEMENT**

	PART NUMBER	LUMENS	LENS/ LED	MOUNT	CONNECTION
	100WK0003	300 lm - Minimum	○ ○ CLEAR / WHITE	M5 BOLT	2-WIRE



AX100 SERIES 5.5" WARNING LIGHT

5.5" L X 1.875" W X 1.25" H

4-PIECE KITS

	PART NUMBER	LENS/ LED	MOUNT	CONNECTION
	100WA0007	○ ○ ● CLEAR / WHITE RED	SCREW	3-WIRE
	100WA0008	○ ● ● CLEAR / RED RED	SCREW	3-WIRE
	100WA0009	○ ○ ○ CLEAR / WHITE WHITE	SCREW	3-WIRE
	110WA0007	○ ○ ● CLEAR / WHITE RED	SCREW	3-WIRE HARNESS
	110WA0008	○ ● ● CLEAR / RED RED	SCREW	3-WIRE HARNESS
	110WA0009	○ ○ ○ CLEAR / WHITE WHITE	SCREW	3-WIRE HARNESS

Formerly: AUXILIARY/SUPPLEMENTAL WARNING LIGHT

BEACONS



4000 SERIES LOW PROFILE

6.7" ROUND X 3.19" H

PART NUMBER	LENS / LED	MOUNT	CONNECTION
100BC0003	○ CLEAR / WHITE	SCREW	2-WIRE
100BC0004	● AMBER / AMBER	SCREW	2-WIRE

Formerly: CHARLOTTE LOW PROFILE SERIES



4000 SERIES HIGH PROFILE

6.7" ROUND X 4.8" H

PART NUMBER	LENS / LED	MOUNT	CONNECTION
100BC0001	○ CLEAR / WHITE	SCREW	2-WIRE
100BC0002	● AMBER / AMBER	SCREW	2-WIRE

Formerly: CHARLOTTE HIGH PROFILE SERIES

NEW!

4100 SERIES HIGH PROFILE

6.7" ROUND X 4.8" H



PART NUMBER	LENS / LED	MOUNT	CONNECTION
100BC0019	○ CLEAR / ● AMBER	4-SCREW	3-WIRE
100BC0021	○ CLEAR / ○ WHITE	4-SCREW	3-WIRE

UPDATED FEATURES INCLUDE:

- Redesigned reflector for increased luminosity
- Updated mounting from 3-screw to 4-screw base
- Additional flash patterns

MARKER LIGHTS

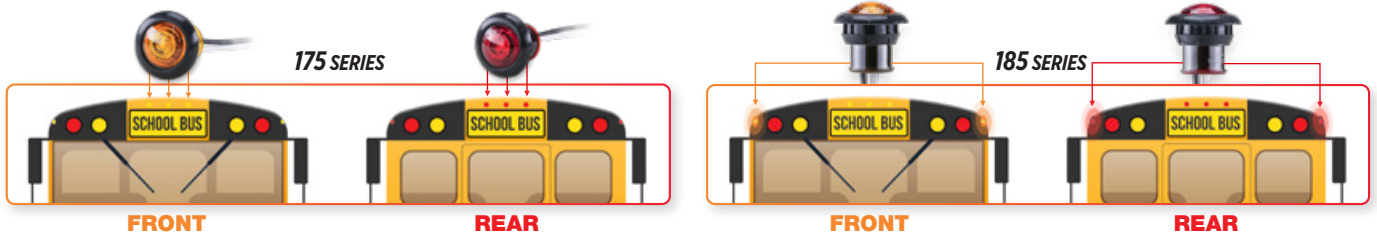
NEW!

175 & 185 SERIES 3/4" MARKER & ID CLEARANCE LIGHTS

1" ROUND X .9" H BULLET LIGHTS (FITS 3/4" HOLE)
GROMMET MOUNT WITH 2 WIRE SHEATH HARNESS



	PART NUMBER (BULLET)	PART NUMBER (2-WIRE)	LENS / LED	MARKING	APPLICATION
175 SERIES	100ML0038	100ML0046	● RED / ● RED	P2/P3	CLEARANCE, ID, MARKER (REAR)
	100ML0039	100ML0047	● AMBER / ● AMBER	P2/P3	CLEARANCE, ID, MARKER (FRONT)
185 SERIES	100ML0052	100ML0050	● AMBER / ● AMBER	P2/P3/PC2	CORNER CLEARANCE (FRONT)
	100ML0053	100ML0051	● RED / ● RED	P2/P3/PC2	CORNER CLEARANCE (REAR)



120 SERIES 4" OVAL MARKER LIGHTS

4" L X .75" W X 1" H



	PART NUMBER	LENS / LED	MOUNT	CONNECTION
	100ML0013	● RED / ● RED	SCREW	2-WIRE
	100ML0014	● AMBER / ● AMBER	SCREW	2-WIRE
W/ GUARD	110ML0007 WITH GUARD	● RED / ● RED	SCREW	2-WIRE
	110ML0008 WITH GUARD	● AMBER / ● AMBER	SCREW	2-WIRE

Black Mounting Guard Available as a Stand-alone part using part number: 100BR001



MARKER LIGHTS



140 SERIES 4.5" RECTANGLE MARKER LIGHTS

4.5" L X 1.6" W X .46" H

PART NUMBER	LENS / LED	MOUNT	CONNECTION
100ML0015	● RED / ● RED	SCREW	2-WIRE
100ML0016	● AMBER / ● AMBER	SCREW	2-WIRE

150 SERIES 2.5" RECTANGLE MARKER LIGHTS

2.5" L X 1.25" W X 0.8" H



Black Mounting Guard Available as a Stand-alone part using part number: 100HG0002

	PART NUMBER	LENS / LED	MOUNT	CONNECTION
W/GUARD	100ML0019 WITH GUARD	● RED / ● RED	SCREW	2-WIRE
	100ML0020 WITH GUARD	● AMBER / ● AMBER	SCREW	2-WIRE



350 SERIES 3.5" TRIANGLE TEARDROP MARKER LIGHTS

3.44" L X 2.63" W X 1.66" H

PART NUMBER	LENS / LED	MOUNT	CONNECTION
100ML0032	● RED / ● RED	SCREW	1-WIRE & GROUNDING SCREW
100ML0033	● AMBER / ● AMBER	SCREW	1-WIRE & GROUNDING SCREW



520 SERIES 5" OVAL MARKER LIGHTS

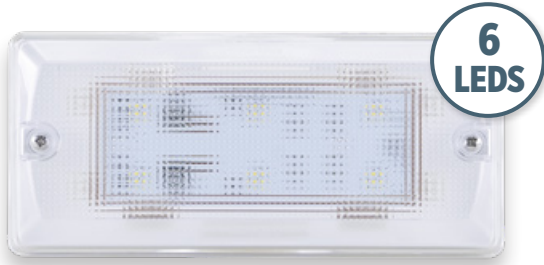
5" L X 2.3" W X .8" H

PART NUMBER	LENS / LED	MOUNT	CONNECTION
100ML0029	● RED / ● RED	SCREW	2-WIRE
100ML0030	● AMBER / ● AMBER	SCREW	2-WIRE
100ML0031	○ CLEAR / ○ WHITE	SCREW	2-WIRE

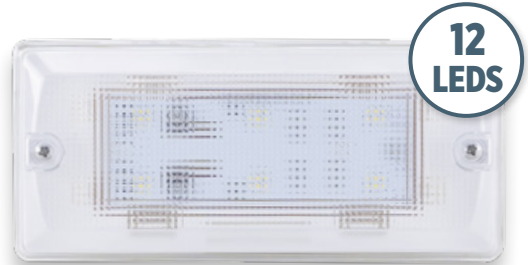
INTERIOR LIGHTS

LED DOME LIGHTS

CLEAR LENS / WHITE LED | VARIABLE CONFIGURATIONS



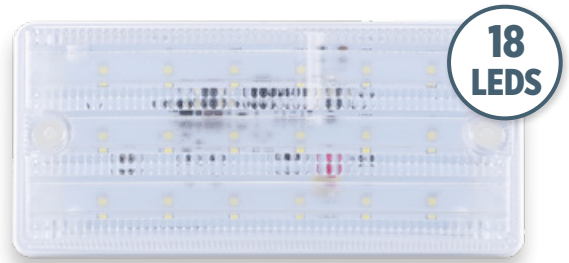
1 DL3000 SERIES
3.15" W X 7" L X 1.46" H
6 LEDs



2 DL3500 SERIES
3.15" W X 7" L X 1.46" H
12 LEDs



3 DL1500 SERIES
2.8" W X 5.8" L X .77" H
15 LEDs



4 DL1000 SERIES
3.3" W X 7" L X .74" H
18 LEDs

		PART NUMBER	SET	VOLTAGE	MOUNT	CONNECTION
1		100DL0003	1 EA	12	SCREW	DELPHI 12047663
		110DL0001	4-CT KIT			
		110DL0002	8-CT KIT			
2		100DL0004	1 EA	12	SCREW	DELPHI 12047663
		110DL0003	4-CT KIT			
		110DL0004	8-CT KIT			
3		100DL0005	1 EA	12	SCREW	2-WIRE
4		100DL0010	1 EA	12 / 24	SCREW	2-WIRE



The Opti-Luxx Story begins over twenty years ago, when we pioneered the use of LED lighting technology in commercial vehicle applications by developing **the first LED school bus lights**, making sure our kids had the safest transportation possible. From there, we expanded that same technology to deliver safety and performance for commercial fleets — with the **brightest and best** lighting to illuminate dark work environments and cut through the visual clutter on roadways to **command visual attention**.

We take very seriously, our core value that **Seeing IS Safety**. We ensure our lighting products fulfill the safety and market needs of people and businesses in our community and beyond. We provide our customers the best in product development, application engineering, program management and launch support for new and existing products. Our lighting portfolio considers all sides of the vehicle, forming a 360-degree shield of bright and dependable lighting protection for all roadway scenarios.

As we continue to develop new products and innovate new ways to command visual attention for commercial vehicles, we are proud to be the leading full-service supplier of LED commercial vehicle lighting. The products you receive from Opti-Luxx will meet or exceed your expectations for quality and delivery — **today, and down the road**.



Opti-Luxx.com | (616) 379-4142

Copyright © 2026 Opti-Luxx Inc. All rights reserved.



SB-C-001 (5/26)