

610 Series Dual Color 6" Oval LED Warning Light

**Connect up
to 8 lights!**

Mix & Match:

- 610 Series Oval Warning Lights
- 4100 Series High Profile Beacons



The 610 Series Dual Color Oval LED Warning Lights produce attention-grabbing warning signals that are designed to meet the demands of multiple commercial vehicles including work trucks, cranes, municipal, construction, tow trucks, delivery vehicles, and more. The 610 Series produces a powerful amber and green warning signal and allows situation-specific warning options from 14 different flash patterns. These warning lights are easily connected to your vehicle with a bare 3-wire connection and can be connected with synchronization to other 610 Series Oval Warning lights, or to the 4100 Series Beacons (with a maximum of 8 lights).

FEATURES

- Amber and green LEDs combined in one 6" oval warning light
- High output LED's with multiple flash patterns
- Synchronization capabilities with other 610 Series lights or 4100 Series Beacons (up to 8 lights)
- SAE J595 Certification Class 2 for Amber and Class 3 for Green

FLASH PATTERNS

1. **AMB/GRN** alternating double strobe phase 1*
2. **AMB/GRN** alternating triple strobe phase 1*
3. **AMB/GRN** alternating single phase 1
4. **AMB/GRN** alternating double phase 1
5. **AMB/GRN** alternating triple phase 1
6. **AMB/GRN** alternating quad phase 1
7. **GRN/AMB** alternating double strobe phase 2*
8. **GRN/AMB** alternating triple strobe phase 2*
9. **GRN/AMB** alternating single phase 2
10. **GRN/AMB** alternating double phase 2
11. **GRN/AMB** alternating triple phase 2
12. **GRN/AMB** alternating quad phase 2
13. **AMB Single color double flash***
14. **GRN Single color double flash***

CONFIGURATION

| LENS | LED | MOUNT | CONNECTION |
|-------|-------------|---------|-------------|
| CLEAR | AMBER+GREEN | GROMMET | BARE 3-WIRE |

KEY SPECIFICATIONS

INPUT VOLTAGE RANGE

9-16VDC

LED COUNT

610 Series: 20 Amber, 20 Green

FLASH PATTERNS

14

OPERATING TEMPERATURE

-40° C to +65° C

DIMENSIONS

Height – 1.06"

Length – 7.44"

MOUNTING

Grommet

CERTIFICATIONS

AMB: SAE J595 Class 2 Compliant

GRN: SAE J595 Class 3 Compliant

IP Code: IP67/IP69k

WARRANTY

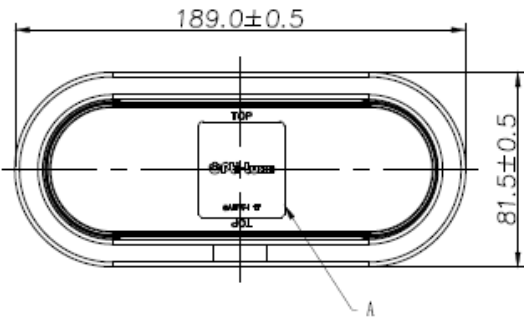
3 YEAR

1 First pattern listed = **Default flash pattern**

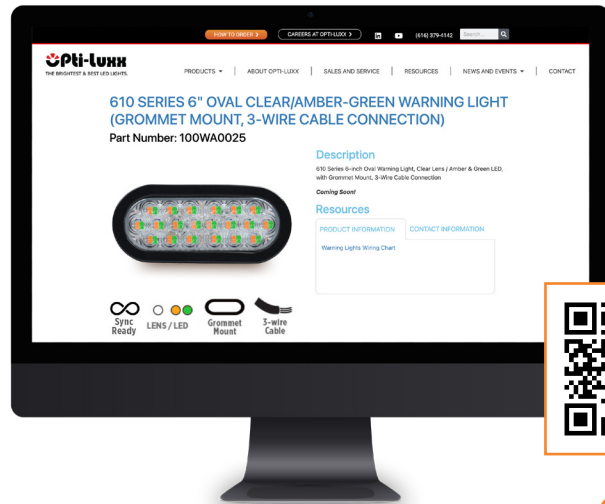
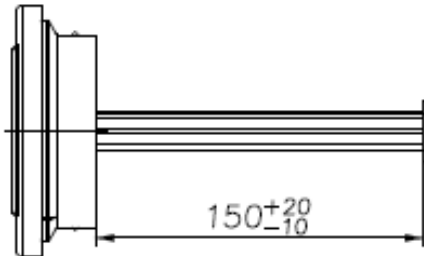
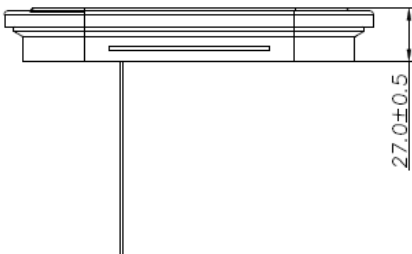
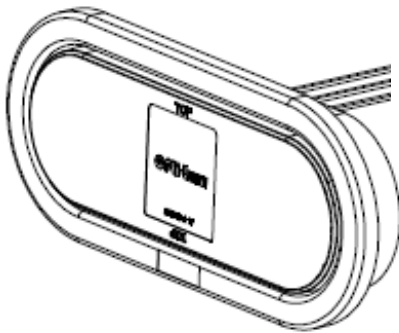
* SAE J595 Class 2 Compliant (Amber)
SAE J595 Class 3 Compliant (Green)

610 SERIES DUAL COLOR 6" OVAL LED WARNING LIGHT

MEASUREMENTS SHOWN IN MILLIMETERS



| SERIES | PART NUMBER | LENS / LED | MOUNT | CONNECTION |
|------------|-------------|---|---------|--------------|
| 610 SERIES | 100WA0025 |    CLEAR / AMB GRN | GROMMET | 3-WIRE CABLE |



For more specifications and details, visit the product page on opti-luxx.com.

LEARN MORE

To learn more about the 610 Series Dual Color LED Warning Light, please visit our website at www.opti-luxx.com or call (616) 379-4142.



www.opti-luxx.com
(616) 379-4142