

LB1500 Series

Class 1 15" LED Light Bar



Formerly "Phoenix" Series

The LB1500 Series Class 1 LED Light Bar is a sturdy, compact-designed high-profile light bar that produces a powerful amber, white, or green warning signal. Measuring 15" wide, this versatile light bar packs a punch despite its small footprint. Multiple mounting options are available, including a magnetic mount which includes a cigarette lighter adapter that allows you to toggle through all 10 flash patterns quickly and easily, providing you with great flexibility on the job. A perfect solution for multiple applications, including construction, municipal, service vehicles, and work trucks. Multiple options are available for both LED and lens color, including a green LED and a dual-color white and amber LED options.

FEATURES

- 7 light bars in the series
- Rugged Polycarbonate construction
- Lens with UV inhibitors
- 360 degree illumination provides outstanding visibility from all angles
- SAE Class 1 certified*



FLASH PATTERNS

1. Single Flash[†]
2. Front/Back
3. Quad
4. Rotating
5. Rotating + Compass + Triple
6. Alternating
7. Double Flash[†]
8. Quint
9. Rapid Alternating
10. Rapid Front/Back

OPTIONS

LENS	LED	MOUNT	CONNECTOR
CLEAR	AMBER	MAGNET	CIGARETTE LIGHTER
CLEAR	AMBER	STUD	CABLE
CLEAR	WHITE	MAGNET	CIGARETTE LIGHTER
CLEAR	WHITE	STUD	CABLE
CLEAR	GREEN	MAGNET	CIGARETTE LIGHTER
CLEAR	GREEN	STUD	CABLE
CLEAR	AMBER WHITE	MAGNET	CIGARETTE LIGHTER

SPECIFICATIONS

INPUT VOLTAGE RANGE
10-30 VDC

CURRENT DRAW
1. Amber LED:
1.2A/3.5A (min/max)
2. White LED and Green LED:
1.44A/3.8A (min/max)
3. Amber+White LEDs:
2.2A/5.6A (min/max)

LED COUNT
64

FLASH PATTERNS
10

OPERATING TEMPERATURE
-40 C to +65 C

DIMENSIONS
 Length: 15.26"
 Width: 8.65"
 Height: 3"

MOUNTING
 Magnet
 Stud

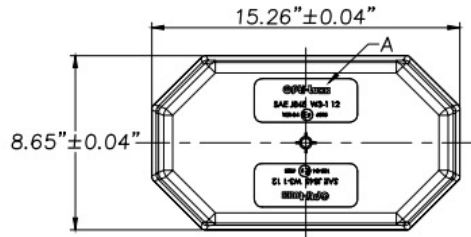
CERTIFICATIONS
 SAE J845/2139 CLASS 1
 FMVSS/CMVSS 108

WARRANTY
3 YEAR

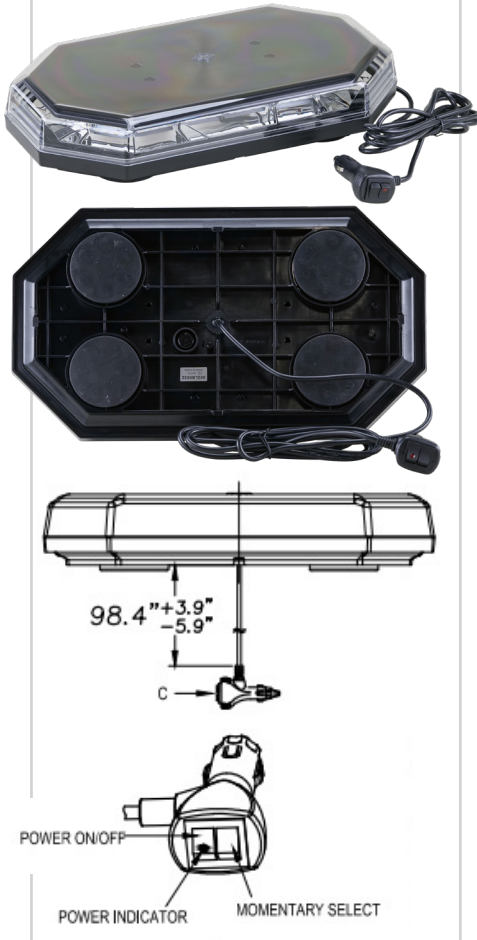
* Green LED models excluded from SAE J845 Class 1 Compliance

[†] SAE J845 Class 1 Compliant Flash Pattern

LB1500 SERIES CLASS 1 LIGHT BAR DETAILS AND MODEL SELECTION

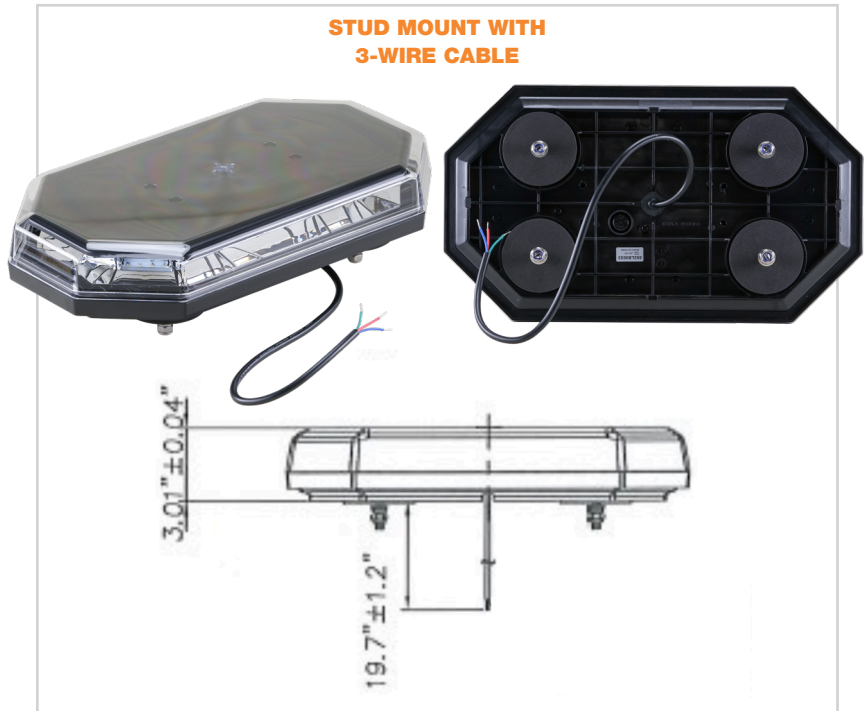


MAGNET MOUNT WITH CIGARETTE LIGHTER CONNECTOR



PART NUMBER	SIZE	LENS / LED	MOUNT	CONNECTOR
100LB0031	15"	CLEAR / AMBER	MAGNET	CIGARETTE LIGHTER
100LB0032	15"	CLEAR / AMBER	STUD	CABLE
100LB0033	15"	CLEAR / WHITE	MAGNET	CIGARETTE LIGHTER
100LB0034	15"	CLEAR / WHITE	STUD	CABLE
100LB0035	15"	CLEAR / GREEN	MAGNET	CIGARETTE LIGHTER
100LB0036	15"	CLEAR / GREEN	STUD	CABLE
100LB0038	15"	CLEAR / AMB WHT	MAGNET	CIGARETTE LIGHTER

STUD MOUNT WITH 3-WIRE CABLE



LEARN MORE

To learn more about the LB1500 Series Class 1 LED Light Bar, please visit our website at www.opti-luxx.com or call (616) 379-4142. Also, see our lighting products in action by following our YouTube channel.



Follow us on YouTube to see more Opti-Luxx products in action, including available flash patterns!

